

Loads of Character



\$ 545,000

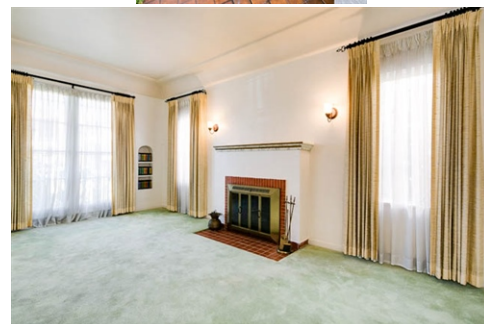


926 E. Lexington Drive, Glendale, CA 91206

WEB: 926EastLexington.com

- » **Beds:** 3 | **Baths:** 1 Full, 1 Half
- » **MLS #:** AR13182550
- » Single Family
- » Classic Spanish, Spacious Living Rm w/fireplace
- » Formal Dining Rm, Cozy Breakfast Nook
- » U[p]dated Kitchen w/ Pantry, Laundry Rm
- » Knotty Pine Den (3rd B/R), 1.5 Baths, Central Air
- » 1415 sq ft, , Covered Patio & Pool!

QR Code



Debbie Pock
(626) 824-4114 (cell)
debbiepock@gmail.com
<http://www.DebbiePock.com>

Berkshire Hathaway HomeServices
115 W. Sierra Madre Blvd.
Sierra Madre, CA 91024
(626) 824-4114

Sold at \$530,000 Character mid-30's Spanish Revival with classic turreted doorway & entry courtyard. Interior detailed with period arched doorways & coved ceilings. Spacious living room with period fireplace is opens to a large formal dining room. Cozy separate breakfast nook leads to an updated kitchen w/blt-in stove, dishwasher, large pantry & adjacent laundry room. Three generous bedrooms, one currently used as a den with knotty pine paneling & 1/2 bath. Full bath with separate tub & shower detailed with black & white deco tiling. Central air through-out. Rear yd great for entertaining with covered patio w/ tiled flooring & sparkling pool. Wrought iron gate, fenced yard & double garage with extra storage area. Close to downtown Glendale, transportation & easy freeway access. A sleeping gem amid the city of Glendale.

DRE # 01024739.

©Properties Online, INC. The above information including square footage is deemed reliable but has not been independently verified and cannot be guaranteed. BHH Affiliates, LLC. An independently owned and operated franchisee of BHH Affiliates, LLC. Berkshire Hathaway HomeServices and the Berkshire Hathaway HomeServices symbol are registered service marks of HomeServices of

